



London Borough of Lewisham

Community Infrastructure Levy: Charging Schedule

The Charging Authority

The Charging Authority is the London Borough of Lewisham

Date of Approval

This Charging Schedule was approved by the Full Council meeting on 25 February 2015

Date of Schedule Taking Effect

This Charging Schedule will take effect on 1 April 2015

Calculating the Chargeable Community Infrastructure Levy (CIL)

CIL will be chargeable on the net additional floorspace (gross internal area) of all new development apart from that exempt under Part 2 and Part 6 of the Community Infrastructure Levy Regulations 2010 (as amended). The amount to be charged for each development will be calculated in accordance with Regulation 40 of the 2010 Regulations (as amended).

CIL Rates

The rate at which CIL will be charged by the London Borough of Lewisham are set out in Table 1 below:

Geographical Zone	Use Class C3	Use Class B	All Other Uses
Zone 1 (see map)	£100 per square metre	£0 per square metre	£80 per square metre
Zone 2 (see map)	£70 per square metre	£0 per square metre	£80 per square metre

Note: Use class is that set out in The Town and Country Planning (use classes) Order 1987 as amended.

Geographical Zones

The two CIL payment zones are shown on map 1. They have been created along postcode boundaries at the time of submission of the draft charging schedule (2013). Table 2 contains the list of postcodes that are subject to the payment of CIL grouped into the two previously arranged zones and Map1 show the exact boundary. Please note that it is only development within the

boundaries of the stated postcodes, as shown on Map 1 and is within the London Borough of Lewisham boundary that is liable for this Lewisham CIL.

Table 2: CIL payment zones (postcodes as 2013)	
Zone 1	SE3, SE8, SE10 & SE16
Zone 2	BR1, BR3, SE4, SE6, SE9, SE12, SE13, SE14, SE15, SE23 & SE26

Calculation of the CIL Charge.

CIL will be calculated on the basis set out in Part 5 of the Community Infrastructure Levy Regulations 2010 (as amended). The amount to be charged for each development will be calculated in accordance with Regulation 40 of the Community Infrastructure Levy Regulations 2010 (as amended). When calculating the CIL liability for a development the relevant rate [R] is the differential rate relating to each specific use as set out in this Charging Schedule.

Statutory Compliance

The Charging Schedule has been approved and published in accordance with the Community Infrastructure Levy Regulations 2010 (as amended) and Part 11 of the Planning Act 2008 (as amended).

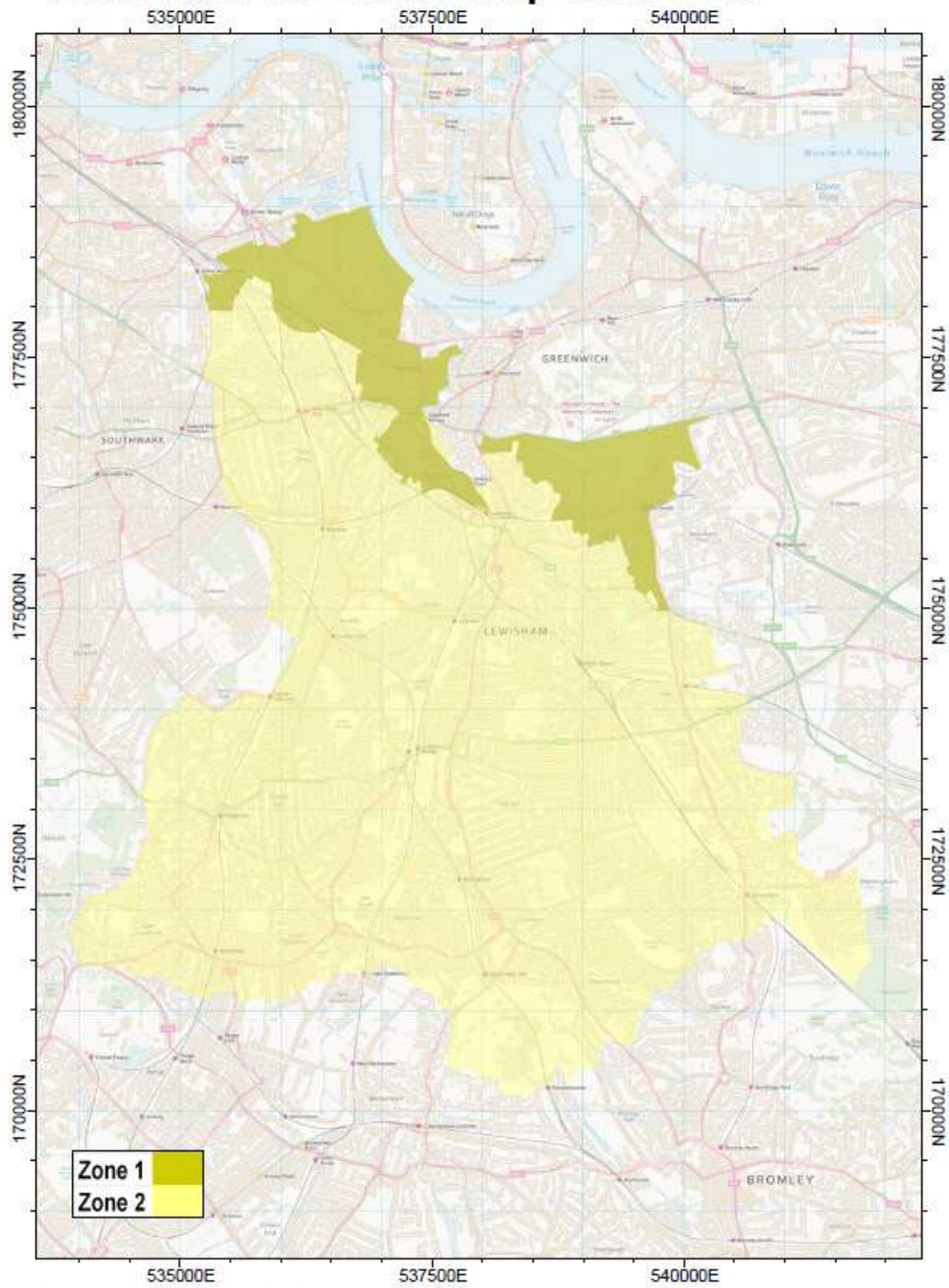
Additional Notes – Not part of the Charging Schedule

Mayor of London CIL

As per Regulation 14 of the Community Infrastructure Levy Regulations 2010 (as amended), the council is designated as the 'Collecting Authority' for the Mayor of London CIL. This requires a charge of '£35 per sqm' to be levied in addition to the amounts specified above (table 1).

Map 1: London Borough of Lewisham CIL payments zones

Lewisham CIL Zones Map June 2013



Crown Copyright, All Rights Reserved 100017710 (2014)